

DEPARTMENT OF ZOOLOGY

FEEDBACK EVALUATION-ACTION REPORT 2017-18

2017-2020 Batch

Department Evaluation

From the above analysis, Laboratory facility, Academic atmosphere, Classroom Facility etc need special attention. The Department discussed the matters with Principal and PTA to take appropriate steps to improve the facilities. To improve the academic atmosphere, to increase the participation in teaching learning process, to take initiative in conducting seminars etc and to improve the library facility, the Department has taken appropriate steps and authorized the teachers to adhere to the action plan of department for improvement in concerned criteria.

Curriculum Evaluation

From the above analysis, it is observed that the criteria like Clarity and Relevance of Learning Material, Extend of Coverage and Curriculum for Empowerment etc in relation to the Curriculum of I year BSc Zoology need to be improved. The Department decided to report the matter to the Board of Studies and take appropriate steps to improve the same.

Faculty Evaluation

The analysis of faculty feedback revealed that teachers have to give special attention on certain criteria. Teachers should also pay attention to give help and guidance to students, to take additional hours to cover topics along with punctuality and class control. It was decided to take necessary action.

DEPARTMENT OF ZOOLOGY
FEEDBACK EVALUATION-ACTION REPORT 2018-19
2017-2020 Batch

Department Evaluation

From the above analysis, criteria like Accuracy of internal assessment and Extension activities/Workshops/seminars need special attention. The Department discussed the matters with Principal and PTA to take appropriate steps to improve the facilities. To improve the academic atmosphere, to increase the participation in teaching learning process, to take initiative in conducting seminars etc and to improve the library facility, the Department has taken appropriate steps and authorized the teachers to adhere to the action plan of department for improvement in concerned criteria.

Curriculum Evaluation- From the above analysis, it is observed that the criteria like meeting Extend of coverage in relation to the Curriculum of II year BSc Zoology need to be improved. The Department decided to report the matter to the Board of Studies and take appropriate steps to improve the same.

Faculty Evaluation

The analysis of faculty feedback revealed that teachers have to give special attention on certain criteria. Teachers should also pay attention to give help and guidance to students, to take additional hours to cover topics along with punctuality and class control. It was decided to take necessary action.

DEPARTMENT OF ZOOLOGY
FEEDBACK EVALUATION-ACTION REPORT 2019-20
2017-2020 Batch

Department Evaluation

From the above analysis, criteria like Laboratory facility need special attention. The Department discussed the matters with Principal and PTA to take appropriate steps to improve the facilities. To improve the academic atmosphere, to increase the participation in teaching learning process, to take initiative in conducting seminars etc and to improve the library facility, the Department has taken appropriate steps and authorized the teachers to adhere to the action plan of department for improvement in concerned criteria.

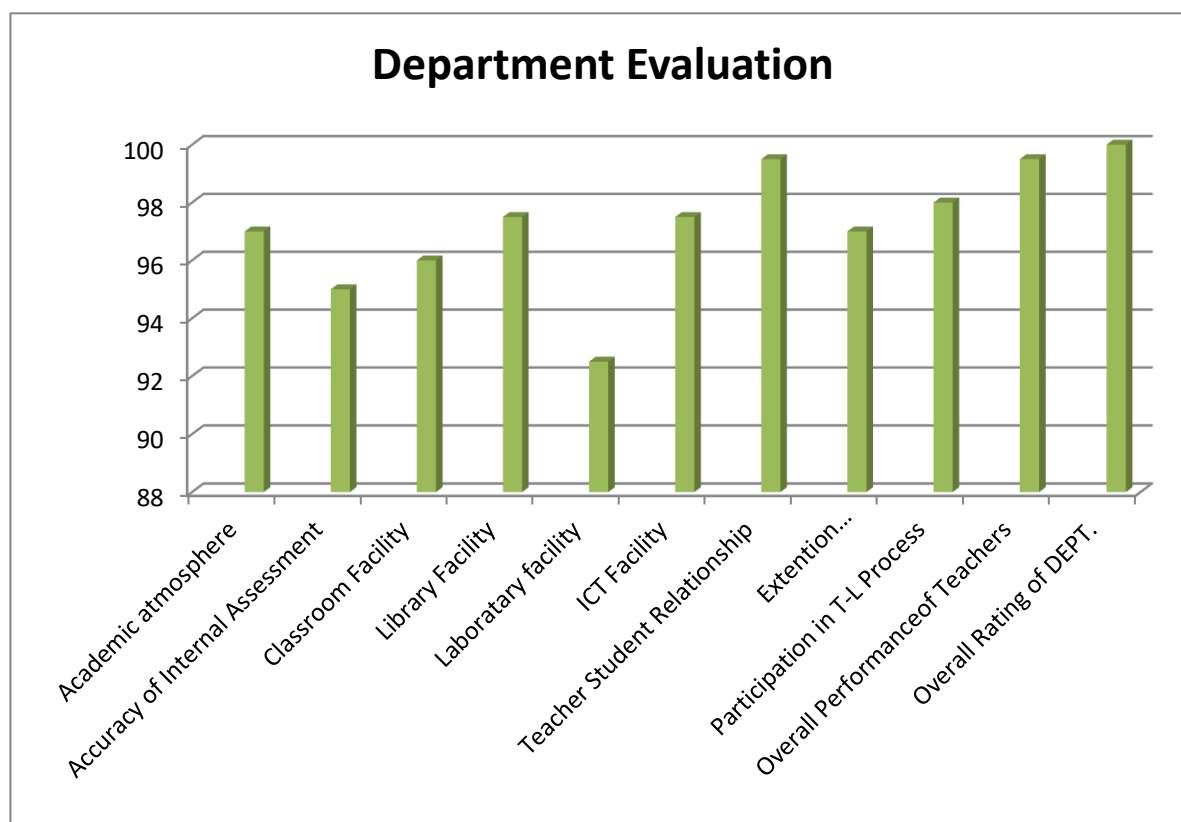
Curriculum Evaluation

From the above analysis, it is observed that the criteria Depth of Syllabus, extend of coverage, Challenge taking etc in relation to the Curriculum of III Year BSc Zoology need to be improved. The Department decided to report the matter to the Board of Studies and take appropriate steps to improve the same.

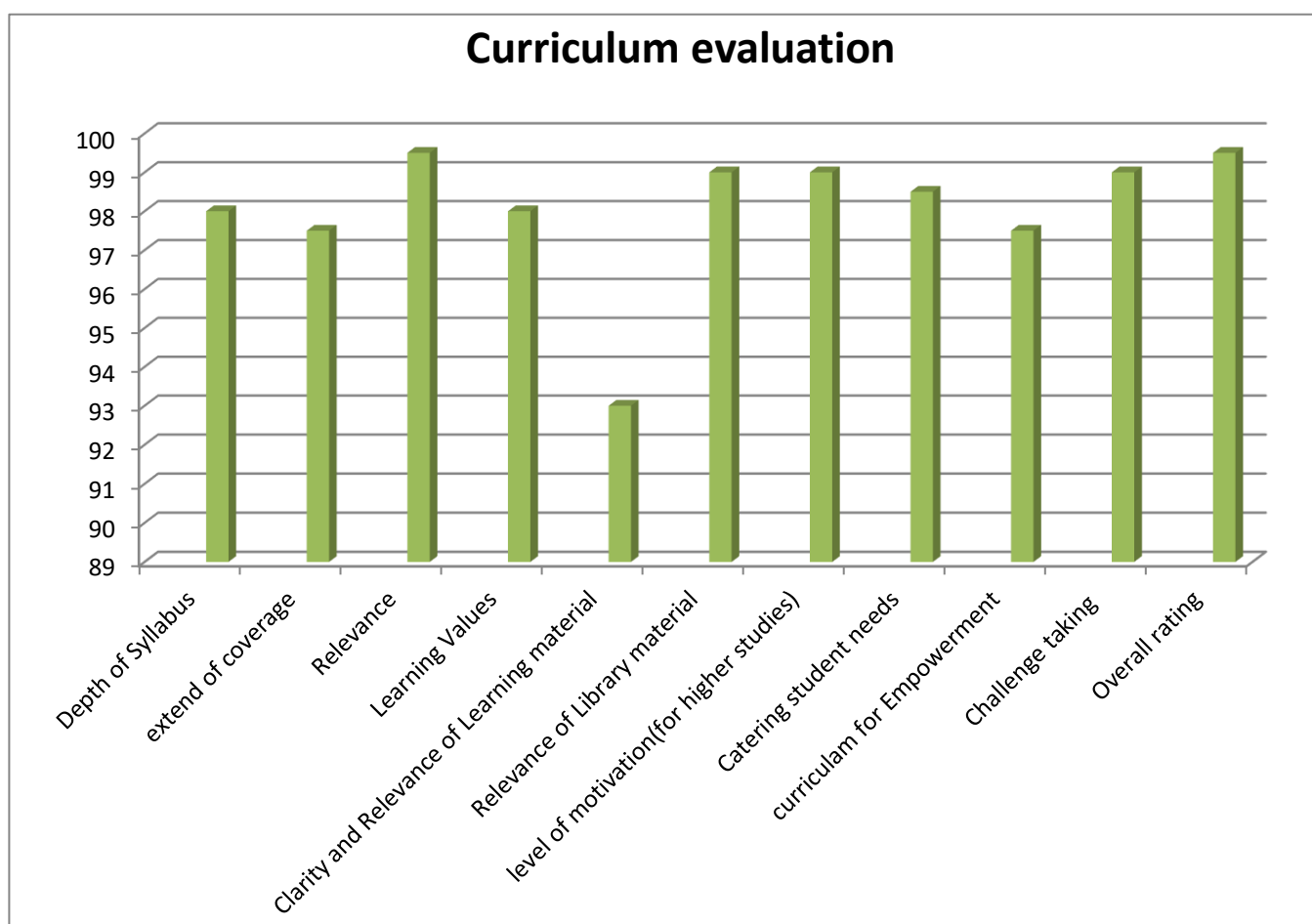
Faculty Evaluation The analysis of faculty feedback revealed that teachers have to give special attention on certain criteria. Teachers should also pay attention to give help and guidance to students, to take additional hours to cover topics along with punctuality and class control. It was decided to take necessary action.

FEEDBACK ANALYSIS - DEPARTMENT OF ZOOLOGY 2017-18

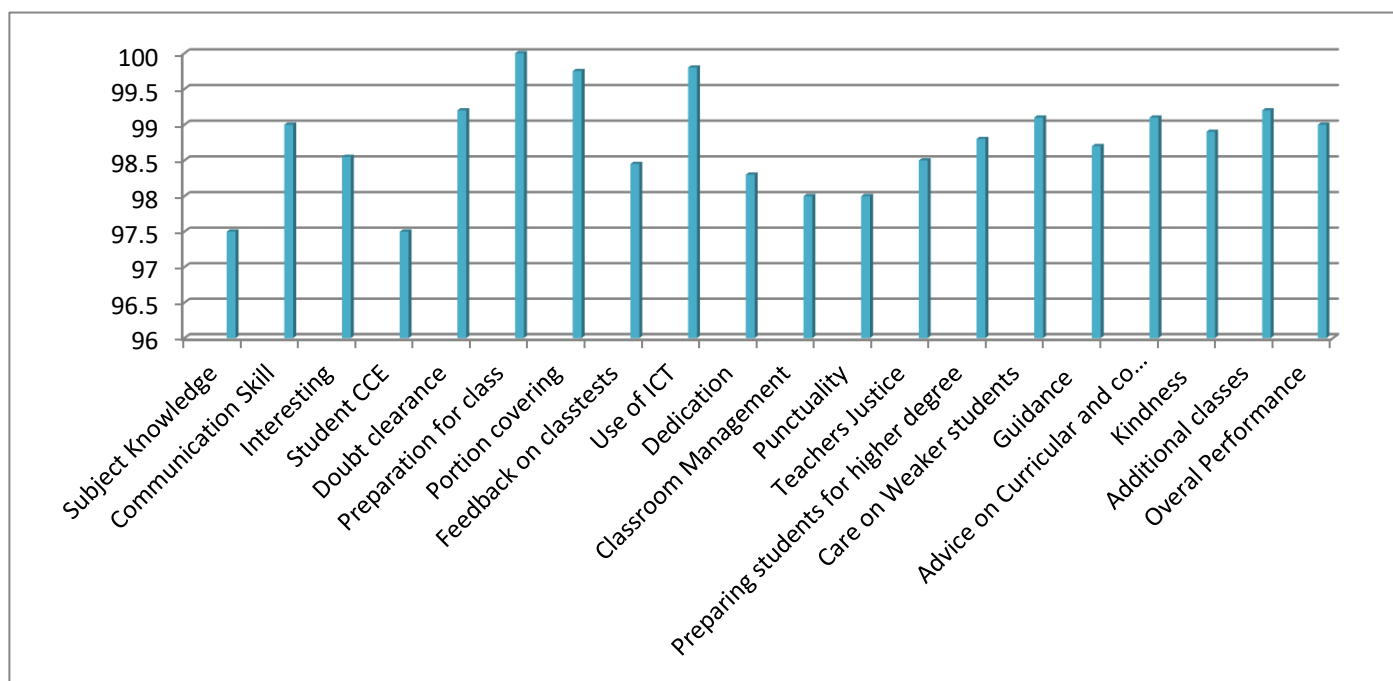
DEPARTMENT EVALUATION	
Charecteristics	Score (%)
Academic atmosphere	97.00
Accuracy of Internal Assessment	95.00
Classroom Facility	96.00
Library Facility	97.50
Laboratory facility	92.50
ICT Facility	97.50
Teacher Student Relationship	99.50
Extention activities/Workshops/seminars	97.00
Participation in T-L Process	98.00
Overall Performanceof Teachers	99.50
Overall Rating of DEPT.	100.00



CURRICULUM EVALUATION	
Charecteristics	Score (%)
Depth of Syllabus	98.00
extend of coverage	97.50
Relevance	99.50
Learning Values	98.00
Clarity and Relevance of Learning material	93.00
Relevance of Library material	99.00
level of motivation(for higher studies)	99.00
Catering student needs	98.50
curriculum for Empowerment	97.50
Challenge taking	99.00
Overall rating	99.50

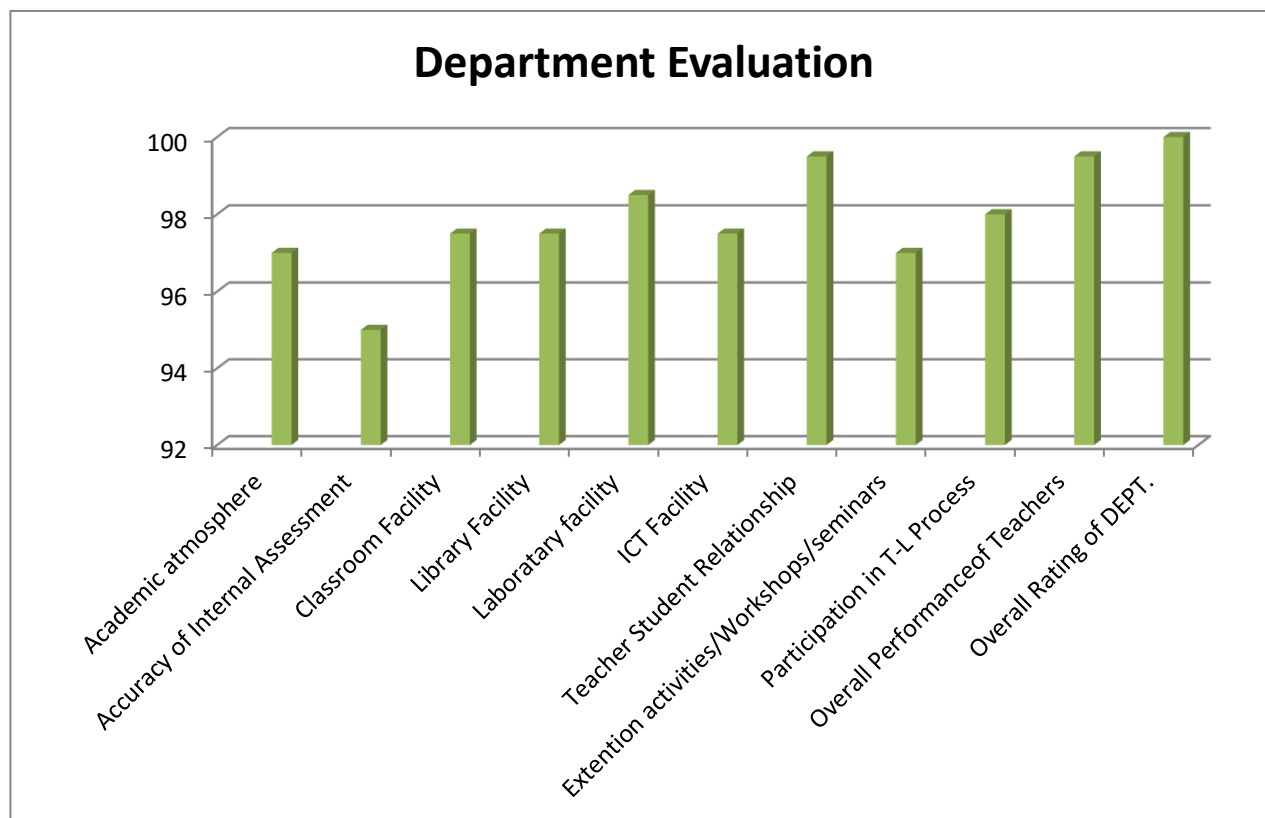


FACULTY EVALUATION	
Item	Score (%)
Subject Knowledge	97.50
Communication Skill	99.00
Interesting	98.55
Student CCE	97.50
Doubt clearance	99.20
Preparation for class	100.00
Portion covering	99.75
Feedback on classtests	98.45
Use of ICT	99.80
Dedication	98.30
Classroom Management	98.00
Punctuality	98.00
Teachers Justice	98.50
Preparing students for higher degree	98.80
Care on Weaker students	99.10
Guidance	98.70
Advice on Curricular and co curricular aspects	99.10
Kindness	98.90
Additional classes	99.20
Overall Performance	99.00

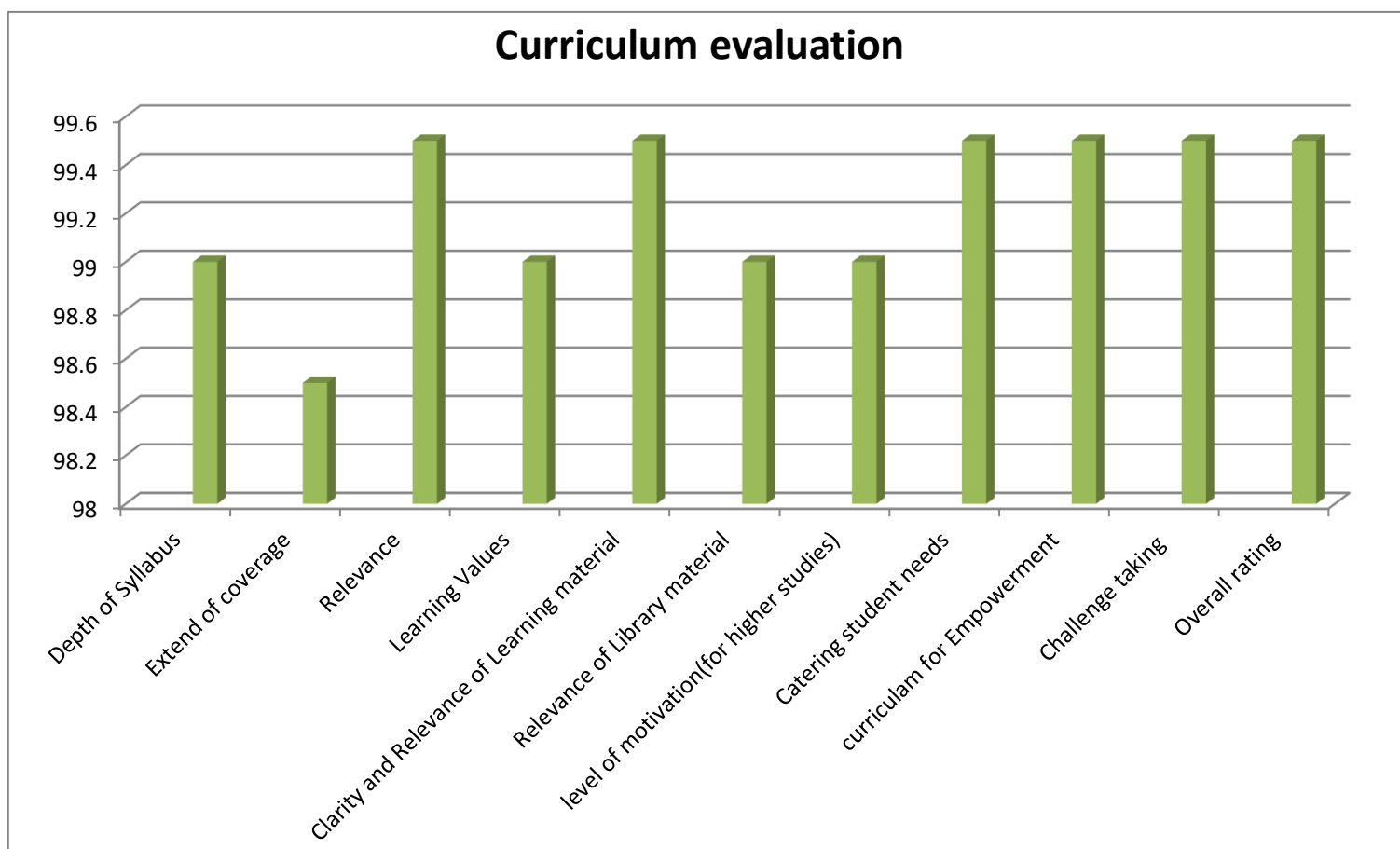


FEEDBACK ANALYSIS - DEPARTMENT OF ZOOLOGY 2018-19

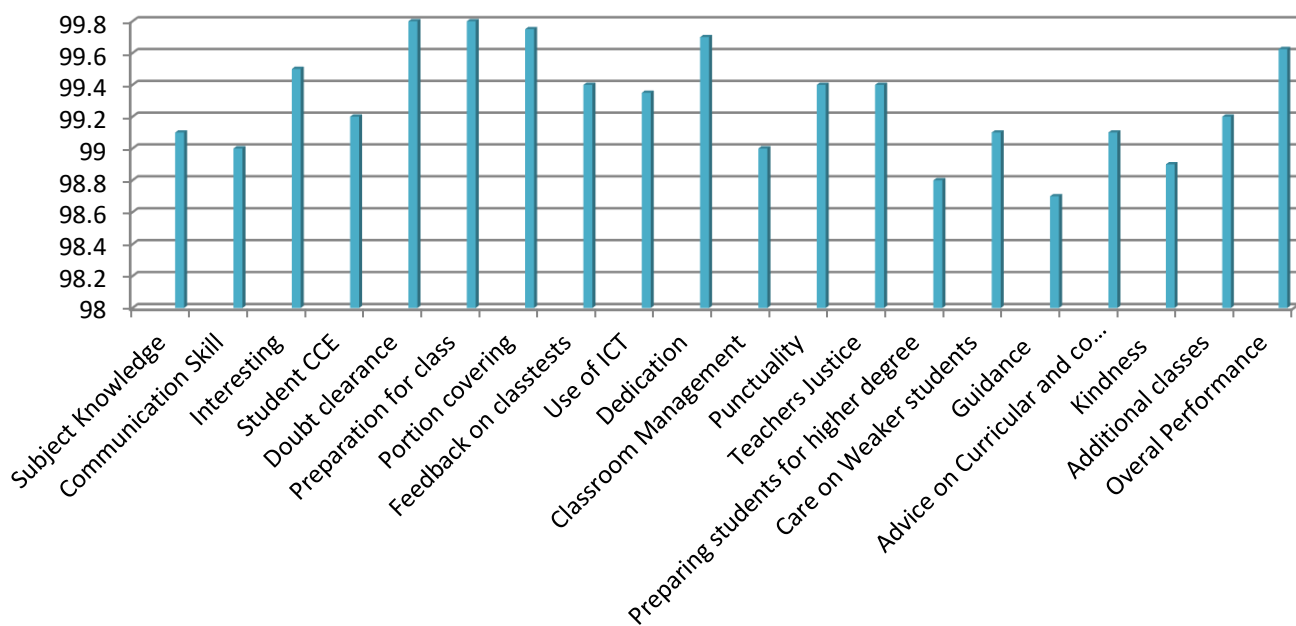
DEPARTMENT EVALUATION	
Charecteristics	Score (%)
Academic atmosphere	97.00
Accuracy of Internal Assessment	95.00
Classroom Facility	97.50
Library Facility	97.50
Laboratory facility	98.50
ICT Facility	97.50
Teacher Student Relationship	99.50
Extention activities/Workshops/seminars	97.00
Participation in T-L Process	98.00
Overall Performanceof Teachers	99.50
Overall Rating of DEPT.	100.00



CURRICULUM EVALUATION	
Charecteristics	Score (%)
Depth of Syllabus	99.00
Extend of coverage	98.50
Relevance	99.50
Learning Values	99.00
Clarity and Relevance of Learning material	99.50
Relevance of Library material	99.00
Level of motivation(for higher studies)	99.00
Catering student needs	99.50
Curriculum for Empowerment	99.50
Challenge taking	99.50
Overall rating	99.50

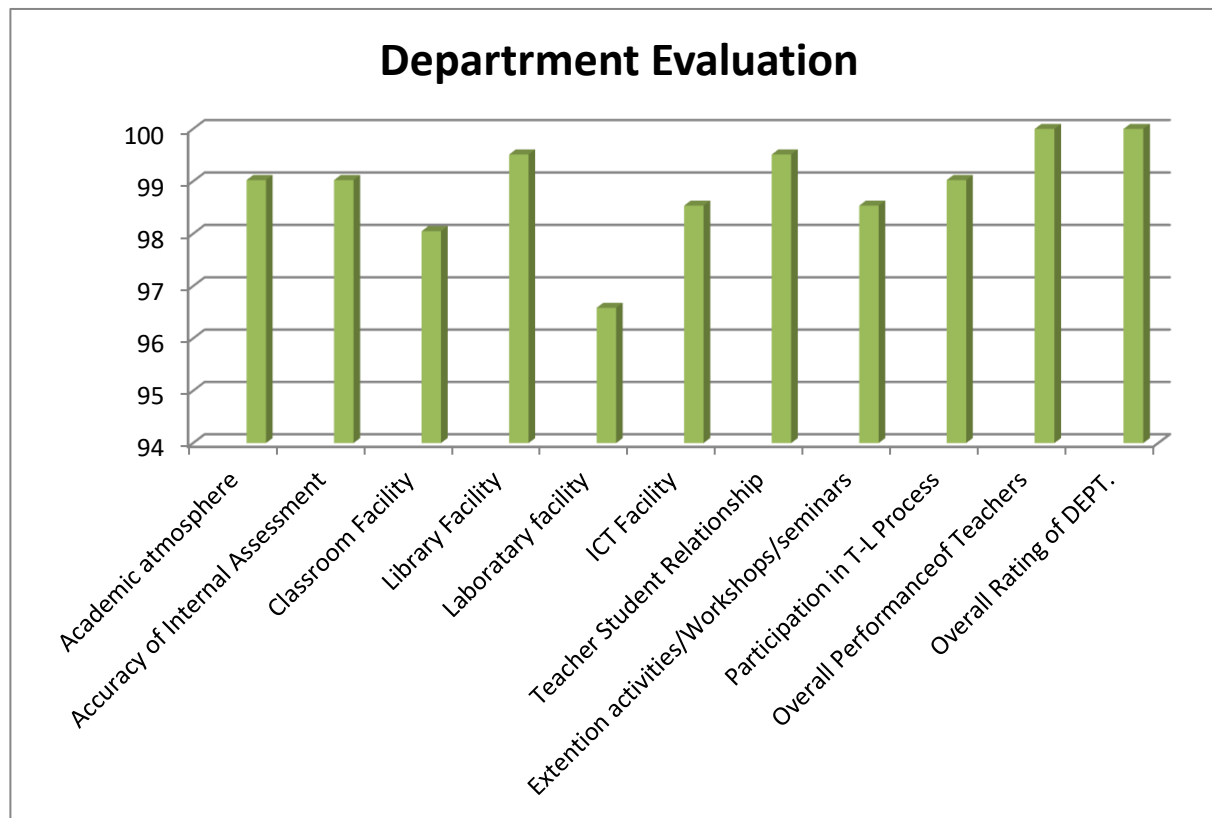


FACULTY EVALUATION	
Item	Score (%)
Subject Knowledge	99.10
Communication Skill	99.00
Interesting	99.50
Student CCE	99.20
Doubt clearance	99.80
Preparation for class	99.80
Portion covering	99.75
Feedback on classtests	99.40
Use of ICT	99.35
Dedication	99.70
Classroom Management	99.00
Punctuality	99.40
Teachers Justice	99.40
Preparing students for higher degree	98.80
Care on Weaker students	99.10
Guidance	98.70
Advice on Curricular and co curricular aspects	99.10
Kindness	98.90
Additional classes	99.20
Overall Performance	99.63

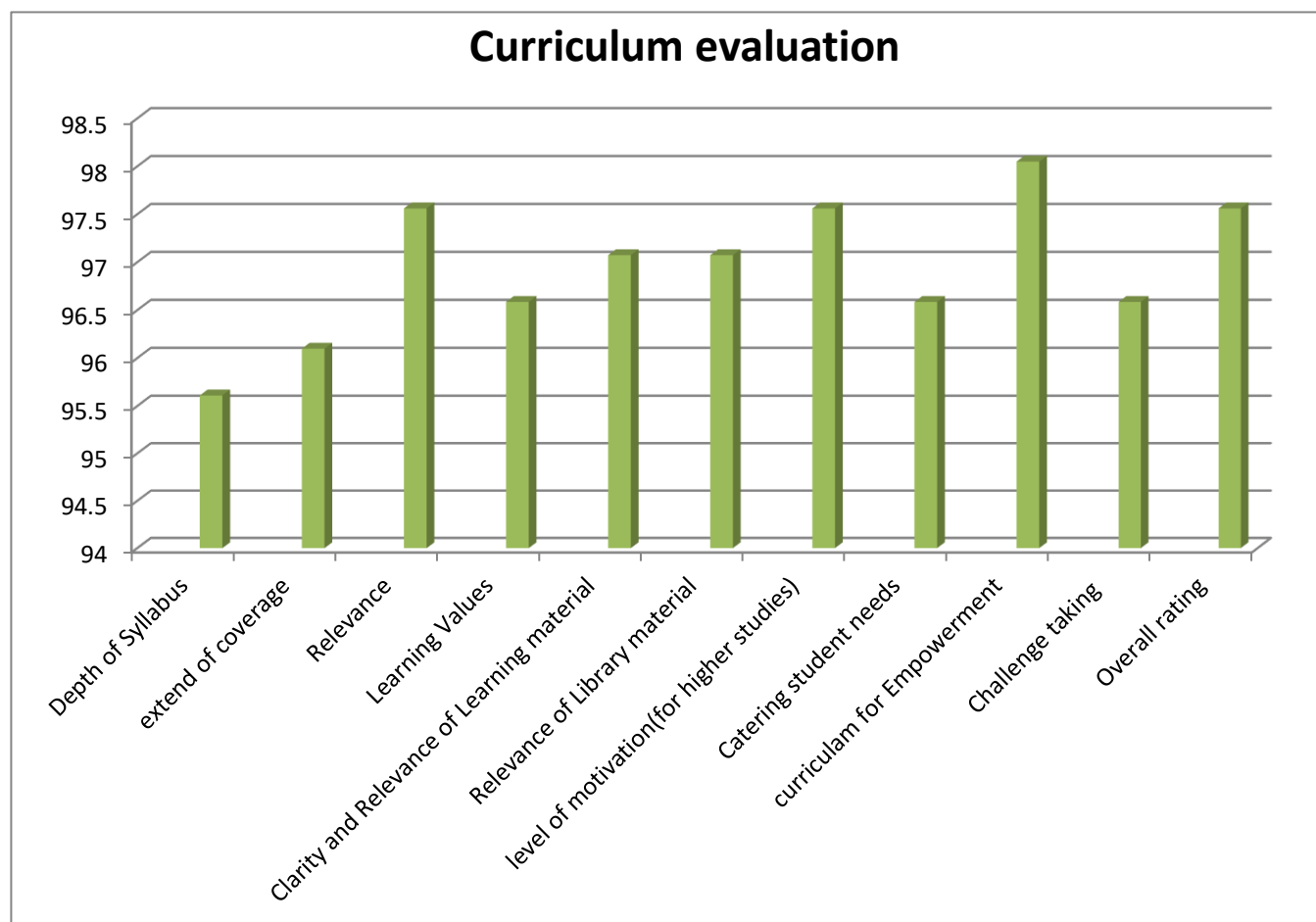


FEEDBACK ANALYSIS - DEPARTMENT OF ZOOLOGY 2019-20

DEPARTMENT EVALUATION	
Charecteristics	Score (%)
Academic atmosphere	99.02
Accuracy of Internal Assessment	99.02
Classroom Facility	98.05
Library Facility	99.51
Laboratory facility	96.59
ICT Facility	98.54
Teacher Student Relationship	99.51
Extention activities/Workshops/seminars	98.54
Participation in T-L Process	99.02
Overall Performanceof Teachers	100.00
Overall Rating of DEPT.	100.00



CURRICULUM EVALUATION	
Charecteristics	Score (%)
Depth of Syllabus	95.61
extend of coverage	96.10
Relevance	97.56
Learning Values	96.59
Clarity and Relevance of Learning material	97.07
Relevance of Library material	97.07
level of motivation(for higher studies)	97.56
Catering student needs	96.59
curriculum for Empowerment	98.05
Challenge taking	96.59
Overall rating	97.56



FACULTY EVALUATION	
Item	Score (%)
Subject Knowledge	99.27
Communication Skill	99.27
Interesting	97.93
Student CCE	98.90
Doubt clearance	99.39
Preparation for class	99.51
Portion covering	99.63
Feedback on classtests	100.00
Use of ICT	98.54
Dedication	99.27
Classroom Management	98.54
Punctuality	99.76
Teachers Justice	99.63
Preparing students for higher degree	98.78
Care on Weaker students	99.51
Guidance	99.51
Advice on Curricular and co curricular aspects	98.41
Kindness	99.39
Additional classes	99.27
Overall Performance	100.00

